



**2023/24**

# Contents

Page 4 - Welcome from the Chair

Page 5 - CEO's report

Page 6 - Our mission

Page 8 - The difference we've made

Page 12 - Why is our work important?

Page 14 - How do we achieve what we do?

Page 18 - Income

Page 20 - Recognition

Page 22 - Looking to the future

Page 24 - Our team

Page 26 - Trustees report and accounts

# Our charitable objects

Lingen Davies exists to enhance cancer services and improve lives, here in our community.

In line with our constitution, the object of the charity is:

(a) The relief, wholly or mainly of cancer patients residing in Shropshire, Telford & Wrekin, and Mid Wales (the charity's area) in particular but not exclusively by providing:

(i) Grants to support the work of cancer healthcare professionals, based within and serving cancer patients in the charity's area; and

(ii) Services direct to cancer patients if the Trustees deem appropriate

(b) The prevention of cancer by raising awareness in the charity's area. Notwithstanding that these may also benefit some cancer/non-cancer patients residing outside the charity's area.

The Trustees have paid due regard to guidance issued by the Charity Commission in deciding what activities the charity should undertake. The Trustees consider the objects and activities of the charity are of a public benefit.





# Activities of the charity

**Lingen Davies exists to enhance cancer services and improve lives in Shropshire, Telford & Wrekin, and Mid Wales. We do this through grant making, awareness raising and service delivery work.**

## Grant making

The charity raises funds for projects which make a positive difference to the lives of people living with cancer in our region. Grants are made to local hospitals, charities, and other bodies to assist with purchasing specialist equipment, improving treatment spaces and supporting community-based projects to improve the health and wellbeing of people living with and beyond cancer.

- **In 2023/24, we agreed 17 new grant applications/requests for funding.**
- **We paid out £735,369 in grant funding.**

## Raising awareness

The charity delivers the LiveLife Cancer Awareness Service, a free health-promotion service working throughout Shropshire, Telford & Wrekin, and Mid Wales.

**Our LiveLife Cancer Awareness team have worked with around 100 organisations and businesses, delivering cancer information, bespoke presentations, and encouraging people to be cancer aware.**

**The team has also attended a wide variety of events and shows this year, dispensing free sunscreen and sun awareness information to the public in the summertime as part of our cancer prevention work.**



## Service delivery

Cancer Champions has been a stand-out success of the year. This programme engages volunteers from across the community, empowering them to be well-informed and have conversations with their peers about cancer signs and symptoms, and encourage uptake of screening programmes.

**We have now trained 450 Cancer Champions across our region – 300 in Shropshire and Telford & Wrekin, and a further 150 in Mid Wales.**

## Fundraising

This year our amazing community has helped us raise £1,342,664. This comes from a variety of sources that we nurture, protect and develop. This includes...

**Community - £252,350**

**Corporate and Sponsorship - £63,734**

**Volunteers – we have 100 active volunteers and we are so grateful to each and every one of them.**

**Our Events – We have a diverse and vibrant events programme and aim to offer something for everyone across as wide a geographical reach as possible. In 2023-24 we raised £165,351 through our internal events and challenge events.**

# Welcome from the Chair

**I am proud to announce that for the third year in a row Lingen Davies Cancer Fund has surpassed the £1million income mark.**

That is due in no small part to the hard work of the dedicated team, our trusty volunteer force, and our fundraisers who continue to surpass expectations and take on a wide range of activities and challenges for the charity. On behalf of my fellow trustees I thank you all for your efforts.

This year we have continued to build on our existing fundraising streams which have enabled us to reach £1,342,664. We have seen a boost in our grant-giving and have committed £735,369 to a wide range of projects which will benefit patients with their clinical treatment, and further our support for those living with and beyond cancer in the community. These include:

## **Surface Guided Radiotherapy Technology**

Thanks to the generosity of the Directors at Telford Plaza Ltd we have been able to purchase Surface Guided Radiotherapy Technology (SGRT) for the Royal Shrewsbury Hospital which has tremendous benefits for patients and staff. Primarily it means radiotherapy patients do not have to be tattooed during treatment.

This permanent reminder of radiotherapy understandably impacts patients in many ways and while it is not an essential part of treatment, it is another example of the charity funding the extras that make all the difference to our community. Shrewsbury and Telford Hospital NHS Trust is now just the 18th trust nationally to offer this to patients.



## **LiveLife Cancer Champions Programme**

We have seen incredible successes with our LiveLife Cancer Champions programme. Building on the funding we were initially given by NHS Shropshire, Telford & Wrekin, to deliver an awareness raising programme amongst communities less likely to take up cancer screening invitations.

To date we have recruited more than 500 people across our region to raise awareness amongst their peer groups and networks about the signs and symptoms of cancer, to encourage more conversations about cancer, break down the taboos and ultimately work towards more people throughout our community seeking as early a diagnosis as possible.

## **Other activity**

Other projects and items funded this year include thermometers for chemotherapy patients (thanks to donations from the Shrewsbury Fundraising Committee), a water cooler for use in urology, an additional cooling cap to help prevent hair loss in the Chemotherapy Day Centre, wig vouchers saving the NHS up to £60,000 this year, and a grossing station to increase capacity in the pathology lab.

As part of our dedication to supporting people to live well with and beyond cancer, Trustees have agreed to fund a pilot project starting in April 2024 to deliver free yoga and tai chi, as well as a horticultural therapies programme and a Renew and Restore in Nature project with Fordhall Farm. We are focused on growing this programme of work which sits alongside our existing iCan Cancer Rehabilitation course, which to date has supported 600 people.

As a cancer survivor myself I know how vital this work is and am proud to be leading this organisation as we look to build on the success of our cancer awareness work, support more people throughout our community, and grow our reach and remit to support patients now and for generations to come.

I would also like to take this opportunity to thank three of our Trustees who stood down this year - Jo Beaver, Francesca Hutcheson and Chris Leake - for their commitment and dedication to the charity. Your experience, guidance and support has been greatly appreciated.

I look forward to another successful year of fundraising and activity.

**Mark Harris**  
Chair of Trustees

# Message from the CEO

**I am delighted to be speaking to you upon my return from maternity leave. It's been wonderful to hear about all of the work undertaken over the last year in my absence and we're now starting to make exciting plans for the future, as we look towards our 50th birthday celebrations in 2029.**

I am thrilled that this is the third year in a row that we have surpassed the £1m income mark. A big thank you from me to all our Friends, fundraisers, volunteers, local companies, staff, Trustees and anyone else who supports the charity in any way, to help us reach this amazing goal.

It is only through your hard work and dedication that we can make such an impact and achieve Lingen Davies Cancer Fund's goals of supporting people affected by cancer across the region.

Over the last few years we have made a focused effort to increase and diversify our range of income streams. This year, we've further extended our events programme to cover more of the region we support – we held our very first Colour Run in Newtown which was a fabulous morning for all involved, even in the pouring rain.

We also launched our inaugural Titty Trail, with 250 people undertaking a 10mile walk over the South Shropshire Hills. Both events were massively well-attended and allowed us to provide more opportunities for our supporters to get involved with the charity in new ways. Both events return bigger and better in 2024.

In April 2023, we opened the doors of our office at Plas Dolerw in Newtown, Powys and I would like to personally thank local residents from Newtown and across Mid-Wales for making us so welcome. We have worked hard this year to establish good working relationships with partners in other third sector and NHS organisations in Mid-Wales, such as Powys Teaching Health Board and PAVO (the Powys Association of Voluntary Organisations),

enabling us to work in collaboration to further support cancer patients in Mid-Wales. Our new Montgomeryshire Fundraising Committee was established in 2023, admirably led by existing supporter Sarah Lewis, and has raised £30,000 since then. We already have our wonderful Shrewsbury Committee (established in 2021), who have raised more than £72,270 since they started - £28,378 in 2023/24. These are dedicated and driven teams of fundraisers who act on our behalf in their own communities, and we thank them for all their hard work and enthusiasm over the last year. We are keen to work with the local community to develop more fundraising committees across the region in 2024.

We are very fortunate to have several corporate supporters from across Shropshire, Telford & Wrekin and Mid-Wales, who every year donate not only money but time, expertise, and volunteer capacity to help us deliver our work. Whether large or small, all efforts are much appreciated.

In particular, thank you to existing supporter Telford Plaza Ltd, for their extremely generous donation for the purchase of Surface Guided Radiotherapy at Royal Shrewsbury Hospital. Also, our most recent corporate partners to come on board, Med Equus, who join long term supporters Rix Petroleum and Aico as some of our major



fundraisers. We are delighted to have you as a part of the Lingen Davies corporate family. Looking to the future, our ambitions are big. We want to be able to provide truly comprehensive support for all people affected by cancer - patients, their families, carers, and friends, from the very start of their cancer journey to life beyond diagnosis and treatment.

We continue our work with Shrewsbury & Telford NHS Hospitals NHS Trust, providing equipment and resources to enhance delivery of clinical care, but we also look to expand the support we can provide across the cancer pathway.

We are delighted to be collaborating with Qube and Shropshire, Telford & Wrekin Integrated Care Board (ICB) to continue our award-nominated work on Cancer Champions. We are also excited to be increasing funding for our co-designed programmes of work such as 'Renew & Restore in Nature' with Fordhall Farm; health and wellbeing sessions for those people with a cancer diagnosis, at any stage of their journey.

Finally, I want to reiterate my huge thanks to everyone involved with Lingen Davies Cancer Fund who make us who we are. To our friendly and hardworking staff team, who go above and beyond every day; our experienced Board of Trustees who give up their own valuable time to support and guide us; to all the partnership organisations across the region who work with us to improve services for the local community; and most importantly to all our supporters.

You make us proud to be part of this amazing community. I look forward to continuing to work with you all over the coming year to make a real difference to the lives of those impacted by cancer across Shropshire, Telford & Wrekin, and Mid Wales.

**Naomi Atkin**  
CEO



# Our mission

**Improving cancer prevention and early diagnosis**

**Enhancing cancer treatment and services locally**

**Supporting people to live well, with and beyond cancer**





# Our mission



# The difference we've made

## Improving Cancer Prevention and Early Diagnosis

It is our vision to make a difference to those impacted by cancer, and we want to make a difference beforehand too.



Lingen Davies has five core values - two of which are to be friendly and supportive' and 'proud to be part of our amazing community'. The LiveLife Cancer Awareness service forms part of delivering those two values.

By reaching out into the wider community we are working to help people understand and reduce their lifestyle risks associated with cancer, recognize the signs and symptoms of cancer, encourage them to seek treatment earlier, and accept cancer screening invitations. Community groups and event organisers can access the free resource to attend their meeting or event. The charity also offers in-house sessions for corporate partners and businesses who wish to run cancer awareness courses.

We continue to utilise our LiveLife Cancer Awareness van. Thanks to a £95,000 donation from the directors of Telford Plaza UK Ltd we purchased a state-of-the-art exhibition van which is now out on the roads, raising awareness about the charity, health engagement and attending fundraising events across the region.

We are also now commissioning our own non-clinical support services for people with cancer. Following our headline review of current provision of social and emotional support services available to people affected by cancer, we have launched a range of projects, providing activities such as yoga and horticultural therapies to improve the wellbeing of those living with cancer. We intend to grow this area of work in the coming years.



### Cancer Champions

We have built a very successful working relationship with the NHS Shropshire, Telford & Wrekin Integrated Care Board (ICB) and Qube (another local charity delivering services in North Shropshire) to co-deliver the national Core20+ health inequalities agenda, in the form of the Cancer Champions programme. Initially funded by NHS England monies through the Core20 work, the cancer champions project is intended to raise awareness about cancer, encourage conversations about cancer, reduce taboos around cancer and cancer screening, and help drive more early diagnoses wherever possible.

Following the success of the Cancer Champions model in Shropshire and Telford & Wrekin, we made the decision to directly employ a Cancer Champion Coordinator in Powys. Helen Davies has been in post since March 2023 and has made excellent progress so far. This post is funded through a generous legacy donation made by a donor who lived in Powys; although we were not restricted in its use, we wanted to ensure this donation had a direct impact on the community in which our donor lived.

We have now trained over 450 Cancer Champions across our region and have big plans for this project going forward. We continue to focus on health inequalities, and have trained people across the community, including those with English as a second language, people working with those experiencing homelessness, and both those working in prisons as well as prisoners themselves.

Following the end of the ICB funded period (March 2024), we have made the decision to continue fund this work ourselves. We are directly employing staff to deliver the project in Telford and Powys, and providing funding for Qube to continue the delivery of the project in Shropshire. We have maintained a close relationship with the ICB and will continue to provide insight from the project to inform the development of services across the healthcare system on a national scale.

The project has been running for 14 months and while we may never hear from the one individual who went to their GP and got a life-saving, early diagnosis, on the back of a conversation with one of our cancer champions, we know that we have more than 500 people at this point who are more aware about the signs and symptoms of cancer than they were before.

### LiveLife Cancer Awareness £135,089

Our LiveLife Project has continued to develop this year, focused on encouraging people to be aware of symptoms and seek medical help as early as possible if they are concerned. Due to some gaps in staffing, some of our activities have been reduced this year, but the team is now back to full strength, and we have big plans for 2024. The Cancer Champions work has been fully embedded into our LiveLife team, and we will be taking this forward across the region now that the NHS funding has come to an end. We will also continue to deliver LiveLife Cancer Awareness talks to businesses and groups, and attend public events with information, signposting and sunscreen!



# The difference we've made

## Ensuring those impacted by cancer locally can access the best possible cancer services

### Grant making

Grant applications are assessed by the Grants and Projects sub-committee of the Trustee Board, and then confirmed by the Trustees where the value of the grant requires this (anything of £10,000 or above). Grants are assessed against the aims and objects of the charity, ensuring that the proposal shows a clear benefit to cancer patients and services within the region.

Close communication is maintained with grant recipients to ensure the grant making process is as successful as possible and achieves maximum public benefit. We are working increasingly closely with grant recipients, specifically looking for projects that meet needs we have identified, and co-producing projects with partner organisations.

### Enhancing cancer treatment and services locally

#### Auto Contouring software - £16,054



This project was jointly funded with RSH League of Friends and SaTH Charity. This software uses Artificial Intelligence to help staff accurately plan radiotherapy treatments, by outlining organs on CT Scan images. This technology saves significant clinical time; and can therefore reduce patient waiting times. There is also evidence that this technology improves treatment accuracy, therefore protecting healthy organs more effectively.

#### SGRT - £416,666



This is now in full use in the Linen Davies Cancer Centre at Royal Shrewsbury Hospital, only the 18th Trust in the country to have this facility.

SGRT greatly improves the patient experience, by removing the need for tattoos and the need for manual handling of the patient. It also makes treatment times more efficient and increases capacity. Initial purchase costs were covered by supporters Telford Plaza UK Ltd and we have agreed that Linen Davies will fund maintenance costs in year 2 and 3 (first year under warranty), after which the full costs will be picked up by the Trust.

#### Scalp Cooling Machine - £15,353



Funding for this project was inspired by a group of young women all aged in their 30s and under, who met whilst undergoing chemotherapy at the Linen Davies Cancer Centre. Cooling caps are used during treatment as a means of preventing hair loss. The group fundraised for an additional cap for use by future patients, and Linen Davies topped up the funds to make the purchase possible.

# The difference we've made

## Ensuring those impacted by cancer locally can access the best possible cancer services

### Thermometers - £291



We have provided patients with a free hand-held thermometer in order for them to monitor their temperature and call the Oncology & Haematology 24 hour helpline if their temperature starts to rise. It is vital that patients receiving chemotherapy seek help if they have a high temperature as this can be a sign of infection, which can be extremely serious for vulnerable patients. In total, we have awarded a grant of £1,200 to be used over a 12-month period.

### Wig Vouchers - £6,642

Each chemotherapy patient at Royal Shrewsbury Hospital is offered a wig voucher to the value of £160+VAT to put towards the purchase of a wig should they so wish, at several local hair salons. We are delighted to have agreed to fund 12 months of wig vouchers to a total of £60,000 starting in January 2024. For the first three months of the year we have spent £6,642.

### Dermatology Couch - £1,680

Provided for the Shrewsbury and Telford Hospitals NHS Trust, this couch will provide increased comfort and better quality outcomes for patients having a biopsy for suspected skin cancer or removal of malignant growths.

### Grossing Station - £41,590

We have funded an additional grossing station within Cellular Pathology at Royal Shrewsbury Hospital to increase the processing capacity needs of cancer work, and improve turnaround times for patient samples. The new equipment provides two more work tables, and a sink, and will double the capacity of this part of the process, as well as providing additional space to up-skill junior staff.

### Water Cooler - £2,185

We have purchased a water cooler for Clinic 12 at Royal Shrewsbury Hospital where urology patients undertake an ultrasound examination for bladder cancer.

Previously, there was no means of patients obtaining water to ensure their bladders were full for the scan to take place. This is essential for a successful procedure.

### Legal Clinics

We have collaborated with four local solicitors – PCB, Fodens, Lanyon Bowdler, and Martin Kaye – who are donating an afternoon of their time each on a monthly basis so we can offer free-to-access legal advice to patients impacted by cancer. They are delivered in conjunction with Macmillan in The Hamar Centre.

### Recognition gifts for National Clinical Nurse Specialist Day - £511



Clinical Nurse Specialists (CNS) are essential to the delivery of great patient care. National CNS Day aims to recognize the huge contribution these people make across the NHS.

This year, we worked with Shrewsbury and Telford Hospitals NHS Trust to provide a gift of a potted plant to every CNS, to say thank you for their hard work. This project was kindly funded by our corporate partner Aico.

### Videos for Chemotherapy and Radiotherapy - £4,200

All of the patients who are referred to the Lingen Davies Cancer Centre for chemotherapy are asked to watch a short video, which gives the patient and relative an understanding of the treatment journey they are undertaking. The existing material was made over seven years ago and is now out of date. The same information video does not currently exist for Radiotherapy patients. We are now funding new videos for both chemo and radiotherapy to ensure that patients, family and carers receive up to date material, feel fully informed about what's to come from their cancer treatment, and to ensure this is filmed in a way to ensure longevity of the material.



# The difference we've made

## Supporting people to live well, with and beyond cancer

As part of our commitment to fund patients in the wider community we have recently agreed funding for the following:

### Jenna Blair Yoga and Tai Chi £1,780

We have committed to funding a pilot programme of yoga and tai chi classes, to benefit those living with cancer from across our region. Starting in April 2024, these will take place at the studios of Jenna Blair Yoga in Shrewsbury, with 13 places in each class, over 12 weeks. Longer term (subject to monitoring and evaluation), we aspire to offer sessions at a range of accessible locations in other areas of our region.

### Horticultural therapies - £3,000

In a concerted move to support more holistic therapies for patients, either during or after their treatment, we have agreed to fund a 12-week pilot of horticultural therapy delivered by 'Bloomin' Lovely' to benefit cancer patients from across the region, which began in April 2024.

Research suggests that activities in natural settings offer greater benefit to those starting with lower wellbeing (e.g. lower levels of self-esteem and mood).



### iCan Cancer Rehabilitation £172,305

This is the second year of funding for the hugely popular iCan project that has so far benefitted over 600 people. iCan is a holistic wellbeing programme addressing and supporting physical, mental, and emotional wellbeing. Run by a team of cancer exercise and wellbeing specialists at Lifestyle Fitness, this service is free for patients to access, and patients can self-refer into the programme, as well as be referred by their medical professional.

Patients living with and beyond cancer can attend ten planned and locally led group sessions of tailored activity (exercise) and information/education, with behaviour support. Each session includes a tailored education session within a group setting around set themes and activities which have been identified through patient feedback/concerns. The initial project period is running with support from University Centre Shrewsbury, who are providing academic analysis of the outcomes and benefits of the programme. Following the first two successful years and strong outcome data, we have agreed to fund a third year of this project. It is currently on offer online, and in person at classes in Shrewsbury, Telford, Oswestry, and Newtown.

### Telford Breast Cancer Support Group - £1,000

This funding enabled the creation of this group, giving Breast Cancer patients the opportunity to meet up and share their experiences with others going through a similar journey, offering an listening ear, sharing practical tips and giving hope away from the hospital setting. It was initially started by Cancer Care Navigators and it is intended patients will take on the longer term organisation.

### Fordhall Farm 'Renew & Restore in Nature' £9,960

Following a patient-led consultation workshop in December 2023, we have agreed to fund a pilot programme of life enriching support for people at all appropriate stages of their cancer journey across Shropshire, Telford & Wrekin, and Mid Wales, delivered at Fordhall Organic Farm in North Shropshire.

These will commence in May 2024, focused on natural environment based restorative experiences, reflecting the changing seasons, and with opportunities to integrate with other community-based activities on the farm. There will initially be 15 fortnightly sessions for up to 15 people per session (over approximately a seven-month period), and following the evaluation of the programme an opportunity to extend the scope of the project further.

### Complementary Therapies - Oncology Ward £11,100

This project is delivered by Severn Hospice for in-patients staying on cancer wards at the Shrewsbury and Telford NHS Hospitals. Complementary therapies can help patients with pain relief, mental health, and wellbeing during their treatment, which can inevitably and understandably be a stressful and difficult time for them. Patients can benefit hugely from receiving complementary therapies during their treatment, and while it was put on hold during the pandemic, it restarted in September 2021 and was much welcomed by staff and patients alike. This is the third year of funding for this project, as per the original grant application. A new application was received and the agreement approved in February 2024 for another three years of funding, with an extended service.

# Why is our work important?

**Every fundraising activity, grant-funded project, and Lingen Davies organised event is for the sole benefit of our community, to help those people impacted by cancer. Here are just a few of their stories.**

**Catherine Pritchard is a mum of two, retired Chief Inspector in the Police, wife, daughter, sister, keen horse rider, passionate about helping others, and more than used to coping with stress on a daily basis.**



When she was just 45 Catherine, now 53, found a peppercorn-sized lump in her breast and when cancer was diagnosed she went from feeling invincible to completely floored. Thankfully her support network, a double mastectomy, and chemotherapy dealt with the cancer... until it returned in 2022.

“The brutal impact of it being a recurring cancer has been very challenging.

“When I went through treatment the second time I had an idea of what to expect. It’s a cruel process, to get rid of the cancer I had a very strong chemotherapy regime and have come out of it really well.”



“I have taken my recovery really seriously, I started yoga and do regular counselling which makes a big difference and has given me the inspiration to keep going. I have joined a national breast cancer support group online and I also have joined my local leisure centre which has classes everyday and ride and compete my horse regularly. I have exercised myself to a positive mindset.

“This time around cancer has become so big in my life and has really affected me. I believe it’s a message to help others and support them. I have been given this strength to do something. I want to share my experiences and help others.”





# Why is our work important?

**Jayne Brooks saw her stepdad pass away from prostate cancer and has had two lots of cancer operations herself – she wants to use her experience to help others and has become a valued cancer champion.**

Jayne, from Shrewsbury, said she could not imagine what she was going to go through and how her life was going to change when she saw her stepdad suffering.

At the age of 72 he died of prostate cancer but had been fit and healthy beforehand. He'd put his aches and pains down to manual work and didn't follow up appointments. But Jayne did.



"If he had done something about it he would probably be here today," she said. "He went to the doctors who sent him for prostate blood tests which showed high levels but he just carried on working seven days a week and it wasn't followed up. By the time he went to the doctors it was stage four cancer and had spread to his bones."

Jayne was 52 when she was called for her first mammogram – she had already had an experience with a cancerous melanoma on her leg so was quick to act when invited for her screening.

They discovered invasive ductal carcinoma (IDC) cancer – abnormal cells growing in the lining of the milk ducts which change and invade breast tissue – in the early

stages. She had to have 12 biopsies until doctors were sure they had pinpointed it all – and just a few weeks later another scan led to a lumpectomy and 15 rounds of radiotherapy.

She said: "It was very early but if I hadn't done anything about it it would have been full blown. Everyone at the Royal Shrewsbury Hospital was lovely, I really felt like I knew what was going on, everyone was very kind and caring.

"I hear people saying they won't go for a mammogram or smear test, and I just think what are they doing, people don't know what's there and going on in their bodies."



**Mark Fielden has raised more than £22,000 for Lingen Davies in memory of his mum Margaret who was diagnosed with breast cancer in 2015 and passed away two years later.**



Mark along with his wife Carly, are the brains and action behind the musical extravaganza Chords Crush Cancer – created to deliver real fun in fundraising by bringing musical contacts together for a night of entertainment and fun. In February 2024 Mark delivered his eighth CCC event raising £3,268 on the night and bringing his grand total to £22,325.

He has recently written a book Memories of Margaret dedicated to his mum's cancer story, and Mark's passion for fundraising and giving something back.

He says: "The event gives me such an amazing feeling of pride, knowing that I have played a part in something that has made such a big difference to such a needed charity and to people's lives."



# How do we achieve all of this? With thanks to all of you...

Our total income this year is £1,342,664 (£1.13m 22/23). We are very proud to have surpassed the £1m mark for the third year, and it is testament to the hard work and dedication of the staff team, as well as all those who support and volunteer for us. We now intend to build on this fundraising to grow and diversify our income streams further.

## Volunteers

We are fortunate to have 100 active volunteers to call on who assist with all manner of activities including office administration, events support, deliver teas and coffees to patients, act as charity ambassadors and deliver patient stories at selected events.



Volunteer time is valued at nearly **£17 per hour** and we know that we could not do what we do without them.



In February we were given **101.5 hours** by our volunteers to support our popular Snowdrop Walk, this equated to £1,725.



In the same month, our office-based volunteers gave a total of **78 hours** – valued at £1,326 to the charity. In March this figure was 55 which equates to a value of £935.

A special mention goes to Major Brian Harper, Doreen Owen, Sophie Ibbotson, Aurna Kenny, Lizzi Doyle and Caroline Venables who all take part in weekly volunteer tasks for us.



## Montgomeryshire and Shrewsbury Fundraising Committees

We also continue to receive great support from our community fundraisers. Alongside many individual fundraisers, we now have volunteer fundraising committees set up in Shrewsbury and Montgomeryshire, as well as a committee established to support our Summer Ball 2024. These committees are highly effective and make a great contribution to the charity.

The Shrewsbury Committee was established in the summer of 2021 and to date has raised £72,270, £28,378 of this in 2023-24.



The Montgomeryshire Committee came into being after we opened our new office in Plas Dolerw, Newtown, giving fundraisers in the area a more local base to visit. This team has got off to a fabulous start raising £30,000 since starting to the end of March 2024.



The income from our Friends scheme this year was £13,828. We were pleased to see an increase in the number of regular donors this year and have plans to further grow this area of income next year.





# Corporate supporters

We really value our corporate support and continue to develop and enhance these relationships. Our corporate supporters donate time, money, resources, and energy to supporting us in a wide range of ways. Whether large, or small-scale operations, all support given is much appreciated.

**Telford Plaza Ltd** - We are particularly grateful to Telford Plaza Ltd, who have donated £416,666 this year to fund the provision of Surface Guided Radiotherapy (SGRT) at the Royal Shrewsbury Hospital. We reported last year that our donor would be dealing directly with the Shrewsbury and Telford Hospitals NHS Trust to fund this project. However, at their request, this money has ultimately been donated to us, and we have funded this equipment using this donation.

**NBC Group** – The team at this Telford based bearings company have taken on several challenges for us this year – skydives and the London Marathon – in memory of Managing Director Dennis Lowe’s son Mark, who passed away with cancer in 2020. The team raised £8,100 this year.



**Cotteswold** – thanks to the ongoing support of the local Dairy firm we were able to collect Christmas donations from their customers, raising the fabulous sum of £1,450 for 23/24.

**Coed-y-Dinas (Welshpool), Dyffryn (Newtown) and Market Street Stores (Newtown)** worked collectively over the Christmas period to fundraise for us. The outdoor retail company has supported Lingen Davies for several years now and in 2023-24 donated £3,758 to us.

**Aico** - Ongoing support from the fire safety experts has amounted to £4,652 overall this year. Not only did they deliver financial support and sponsor our Pedal the Borders event, but they supported our comms and marketing function with video production, volunteer to help with gardening on the hospital site, and allow the Lingen Davies team to use their meeting facilities when needed.

**Rix** – have supported us in different ways over the years including having one of their petroleum delivery vans branded with LD logos. This year a large team took on Lands End to John O’Groats for us, raising £12,268.



**Med Equus** – the equine veterinary team joined us as sponsors of our annual Pedal the Borders event for 2023 – not only taking part in the cycling challenge but also volunteering to support riders at refreshment stops. The team have raised £6,211 and committed to more fundraising going forward.



**Bettws Hall** – have fundraised for Lingen Davies as a thank you for the care and support given to Ann Evans, Founder and Director of the Mid Wales estate. Fundraisers, events and donations from clients have all helped generate £13,488 for us this year.

**Base Architects** have supported Lingen Davies for several years taking on a variety of physical challenges for us. In 2023-24 the Shrewsbury-based firm sponsored our Shrewsbury Colour Run, donating a total of £1,415 overall.



**Henshalls** – the insurance brokers have been long-term supporters of Lingen Davies sponsoring and taking part in many of our events including Pedal the Borders, the Colour Run, and our Bonfire Night Ball. In 2023-24, their support was valued at £2,410.

**Fodens** – we have been delighted to work alongside this Shropshire legal firm to offer our patients free-to-access legal clinics. The company have also actively taken part in our Shrewsbury Colour Run – raising the brilliant sum of £1,500.

# Community fundraising

**We couldn't do what we do without the support of our dedicated and passionate local community. People fundraise for us for a variety of reasons – primarily to say thank you for the care given to a loved one. We celebrate all our fundraisers at an annual event – and we value each and every one of them. Here's just a few:**

## Phil Benbow's Golf Day

Phil organised a golfing day at Llanidloes Golf Course to say thanks for the care given his wife Angela during her breast cancer journey. His golfing partner Andrew Evans had also lost his wife to cancer and the pair got together to fundraise for the charity. Along with their friends in the golfing community they raised £7,160.



**Tom Jones** has raised an astonishing £12,000 throughout the year by selling Lingen Davies pin badges, Christmas cards, organising raffles and running a quiz evening.

Tom lead a fundraising drive with the Royal Antediluvian Order of Buffaloes after losing his wife to cancer. Other lodges also got involved donating money, sourcing raffle prizes and hosting sponsored events.



## Choc's Tractor Run Dec 2023

Whittington and Oswestry Young Farmers Club organised the Oswestry Illuminated Tractor Run last year in memory of Will Roberts, a 26-year-old farmer who passed away in December 2022 from a brain tumour. The incredible fundraiser saw 85 tractors light up Oswestry and surrounding villages raising more than £12,320. It has now become an annual event.

Agritel Online kindly purchased lots of new buckets which we armed volunteers with so they could collect donations as the tractors passed through each village. Hughes Bros Agricultural & Groundcare Machinery, and Aico also supported the event by providing volunteers with hi-vis jackets and torches.





# Challenge events

**We remain in awe of those who take on physical challenges in the name of charity. For some that could be completing a mile walk, for others it literally involves scaling mountains. Thanks to everyone who has pushed themselves to the limits for us.**

## Sunny's Skydive

The Sunny Skydive was a new event for Lingen Davies this year and 17 people took to the skies and leapt for the experience of a lifetime.

Sponsorship alone raised £14,305 – an incredible effort.



## Cotswolds Swim

This was another new event for 2023 and five fearless ladies completed the iconic Cotswold Big Swim Festival course to raise £1,750 between them.

Well done to Adcote School pupil Mollie who lead the pack home with a brilliant time of just 35 mins. Lingen Davies colleagues Helen Knight and Karen Roberts also took on the challenge, and were joined by Rhian and Caron Atherton who all put in a sterling effort. Between them they raised the excellent sum of £1,750.



## Elle Parker – Lake Vyrnwy Half Marathon

Elle was inspired to run the beautiful 13.1 mile course when her Mum, Coral, was diagnosed with a very rare Uterine Cancer. The challenge soon became a family affair with Elle's boyfriend Billy, brother Jack and friend Jack deciding to take part too. Together they raised £7,049,



## London Marathon 2023

Our LM team for the year were a dedicated bunch who collaboratively raised £35,874 by completing the world-renowned course. Each year Lingen Davies receives five charity places and it is a vital part of our fundraised income, we are honoured that many more choose to use their ballot place to fundraise for us too.





# Income

We continue to develop and deliver a robust in-house events programme that has wide appeal and geographical reach. Our highest-grossing event this year was the Shrewsbury Colour Run at £43,828.

This year we launched the Titty Trail; a 10-mile sponsored walk in the beautiful Shropshire Hills. This event is unique in that it aims to raise awareness of breast cancer, as well as raising funds. It was very popular and we will be repeating this event in 2024-25.





# Income

## Just a few of our fundraising events...

**Mid Wales Colour Run Oct 23** – we took the popular Colour Run to Newtown for the very first time and were joined by 330 eager fundraisers who together raised the brilliant sum of £15,000.

**Snowdrop Walk Feb 24** – this was held in February 2024 to honour the memory of the late June Whittaker who had hosted the event at her home, Winsley Hall, for many years helping to raise £6,100 overall.

**Colour Run April 23** – held for the second year at Sansaw Estate in Hadnall, 670 people took part helping to raise £43,828.



**Titty Trail Oct 23** - The Titty Trail Shropshire initiative has two goals – to raise awareness of breast cancer and boost funds to support cancer services across the region. In 2023 the event raised £27,437.



Other income under development includes our Trusts and Foundations applications. This year we have been fortunate to receive funding from The Much Wenlock Forester Trust, Espley Charitable Trust, Wesleyan, Hospital Saturday Fund, AKO Foundation, Heart of England Community Fund, The Inman Charity, Nisa Retail Group, Wynn Foundation, PB Dumbell Charitable Trust, and the Edward and Dorothy Cadbury Trust.

We are working to develop a range of income streams including legacies and In Memoriam streams. While we are very pleased with our fundraising success once again, we are mindful of continued local and global challenges. Across the staff team and the Board of Trustees we are committed to ensuring that this approach and level of achievement is sustainable in the longer term.

We are excited to be expanding our work beyond our traditional fundraising for major appeals, but still have fundraising at the heart of what we do.

Healthcare generally and cancer support within that, remains under huge pressure and we will maintain close links with local NHS and local authority bodies to ensure our plans complement wider strategies and contribute to a better experience for people living with cancer in our region.

We remain in close conversation with Shrewsbury and Telford Hospitals NHS Trust and other local bodies regarding options for funding of equipment and new technologies across the cancer pathway over the coming year.

# Recognition

**We're tremendously proud of the impact we've made, and our people and work have been recognised on a local, regional, and national level.**

In April 2023 Lingen Davies was honoured to join the Mayor of Shrewsbury Awards after being nominated for the LiveLife Cancer Awareness Service and the **large scale impact that has for the benefit of the entire community.**

Miranda Ashwell, our LiveLife Project Lead, was also honoured individually for her role in steering this project and leading the wider Cancer Champions work in partnership with Qube – all aimed at raising awareness about cancer and encouraging people to seek early diagnosis wherever possible.





# Recognition

**The whole team celebrated in November 2023 when we were shortlisted as part of Shrewsbury and Telford Hospital NHS Trust's Annual Celebratory Award. We were delighted to win the title of Volunteer and Partner Award – Partner of the Year.**



**Emilie Kerr** – our Events Marketing Coordinator was shortlisted as a Rising Star in the Charity Communications Network Awards.

Emilie attended an event in London with fellow Communications professionals to recognise the dedication, variety, and successes of various charity marketing campaigns.



# Looking to the future... what next for Lingen Davies?

Our strategic themes remain unchanged, and we will continue to focus our resources on:

- **Improving cancer prevention and early diagnosis rates in our community**
- **Excellent treatment and services locally**
- **Supporting people to live well, with and beyond cancer**

We are making plans for funding and delivering projects that contribute to all of these strategic themes.

We are seriously considering options to increase our commercial activities, develop service delivery space and update our corporate structure to support a broader range of activities.

We are hugely ambitious for the future, and hope to be able to announce some exciting plans in the next 12 months.



We continue to work with partners in Shrewsbury and Telford Hospitals NHS Trust, NHS Shropshire, Telford & Wrekin, and Powys Teaching Health Board, to deliver existing schemes and develop new projects for 2024/25.

This will be a combination of our traditional fundraising and giving of grants to enhance local cancer services, and also working in partnership with other bodies to deliver projects ourselves.

Emma Backhouse has been appointed for 12 months as Chief Operating Officer, with a focus on a project to review our governance, operational and finance structures.

We hope to enter into our next major stage of development in the next 12 months, and engage with all our stakeholders throughout this process.



# Looking to the future... what next for Lingen Davies?

We have done a lot more work in Mid Wales this year, and will be continuing to operate from our office in Plas Dolerw, Newtown, as this has given us a great base in the area. We will be looking to have a presence in the East of our region too.

Across the team we are working hard to develop our professional networks across the region, and help develop services where we can.

We will continue to develop our work on wellbeing projects, working with local business and charities to provide small grants to open up non-clinical support opportunities to people living with cancer.

We are interested in expanding this work to support friends and families of patients, carers, and children affected by a family member living with cancer.

We have agreed to raise funds to support iCan for a third year, following great outcomes from the first two years of delivery.

iCan is being developed and evaluated in partnership with University Centre Shrewsbury, and we have received an excellent draft academic paper detailing the patient benefits of the programme.



We are making plans for another successful year of fundraising events, and looking to grow our engagement with local businesses, our legacy fundraising, and increase applications to trusts and foundations.



# Our team

## Patron: The Honorable Lady Jane Heber-Percy



## Trustees

The Trustees, who served during the year were:

Mark Harris (Chairman)  
Tim Cooper (Vice Chairman)  
Helen Thomas (Treasurer)  
Dr Gill Eatough MBE  
Valerie Edwards  
Dr Jeremy Johnson MBE  
Andrew Killey  
Dr N Srihari  
Mandy Thorn MBE DL  
Francesca Hutcheson (resigned 6 December 2023)  
Chris Leake (resigned 18 July 2023)  
Jo Beaver (resigned 6 December 2023)



New Trustees are elected by the existing Board.

Jo Beaver, Francesca Hutcheson and Chris Leake resigned from the Board during this year; we thank them all for the service and dedication.

## Thanks

The Trustees wish to express their thanks to the people of Shropshire, Telford & Wrekin, and Mid Wales, whose support for the charity has been exceptional once again.

The current economic climate, with increases in the cost of living, presents ongoing challenges across the charity sector and yet we continue to be amazed by the willingness of our supporters to give their time, money and goodwill to support us and people affected by cancer in our region.

We would also like to thank the staff team and congratulate them on another outstanding year of fundraising, development, and service delivery for the charity.

We also thank our patron, Lady Jane Heber-Percy, for her continued support and generosity.

None of the charity's work would be possible without the commitment of the staff, volunteers and supporters, and the Trustees are very grateful for this.



# Our team

## Staff

The day-to-day responsibility for running the charity is delegated to the Chief Executive Officer, Naomi Atkin. Naomi was on maternity leave from 10 March 2023 until 5 March 2024.

Her role was covered by Emma Backhouse, and Naomi is grateful for Emma's hard work and leadership in her absence. Emma has remained with the charity for the next 12 months as Chief Operating Officer. The senior management team is supported by a wider management team and other members of staff.

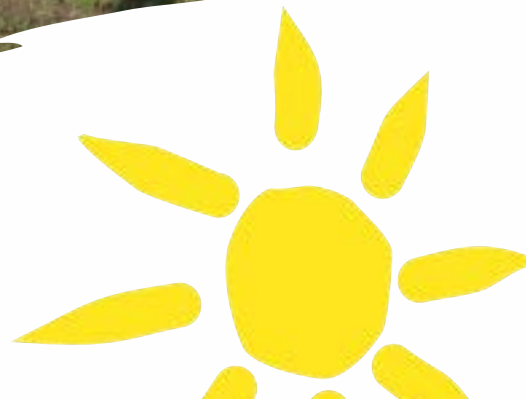
Tarrah Lewis has returned from maternity leave into the more senior role of Relationship Fundraiser, and we have extended Karen Roberts' contract for a further 12 months, supporting our community fundraising and volunteer development.

Helen Knight and Lizzy Ellis will be leaving the fundraising team in Spring 2024 to pursue exciting new opportunities, and we wish them all the best with their future plans.

We will be taking this opportunity to review our fundraising activities and ensure we are structured as well as possible to support future growth.

We are committed to treating our staff well, providing good employee benefits and ensuring a positive working environment for all.

An external HR consultant is engaged to support the management team in ensuring appropriate HR policies and procedures are in place and to help manage any HR issues as they arise.



# Trustees report and accounts

## Legal and Administrative Information

The Trustees present their report and accounts for the year ended 31 March 2024.

The financial statements have been prepared in accordance with the accounting policies set out in note to the financial statements and comply with the charity's governing document, the Charities Act 2011 and "Accounting and Reporting by Charities: Statement of Recommended Practice applicable to charities preparing their accounts in accordance with the Financial Reporting Standard applicable in the UK and Republic of Ireland (FRS 102)" (as amended for accounting periods commencing from 1 January 2019).

Principal address Fundraising Office  
c/o Hamar Centre  
Royal Shrewsbury Hospital North  
Shrewsbury  
Shropshire  
SY3 8XQ

Charity number 1160922

The Charity's Bankers and Auditors are:

Auditor WR Partners  
Belmont House  
Shrewsbury Business Park  
Shrewsbury  
Shropshire  
SY2 6LG

Bankers Santander PLC  
Bridle Road  
Bootle  
Merseyside  
L30 4GB

Lloyds Bank PLC  
2138 Coventry Road  
Sheldon  
Birmingham  
B26 3JW

Virgin Money PLC  
Jubilee House  
Gosforth  
Newcastle upon Tyne  
NE3 4PL

## Fundraising Standards Information CA162A

The charity receives the majority of its funds from the public.

- (a) The charity undertakes fund-raising through our internal resources and staff team. We do not commission a professional fund-raiser/commercial participator for these;
- (b) The charity is registered with the Fundraising Regulator and abides by good practices standards set out by the regulator. The charity's internal Guide to Fundraising reflects these and gives information to staff and volunteers about how to fundraise legally, ethically and within good practice standards;
- (c) The charity monitors fund-raising activities via the Trustee Board;
- (d) The charity received no complaints about activities for the purpose of fundraising during this year;
- (e) The charity has adopted principles of GDPR legislation and also has safeguarding policies to protect the data of vulnerable people and other members of the public from:

- (i) Unreasonable intrusion on a person's privacy;
- (ii) Unreasonable persistent approaches for the purpose of soliciting or otherwise procuring money or other property on behalf of the charity;
- (iii) Placing undue pressure on a person to give money or other property.

## Structure, Governance and Management

The Lingen Davies Cancer Fund, Fundraising Office, Hamar Centre, Royal Shrewsbury Hospital, Mytton Oak Road, Shrewsbury, SY3 8XQ is registered with the Charity Commissioners, number 1160922, as a charitable incorporated organisation and the Charity was entered on the Charity Commission Register on 16 March 2015.

The charity maintains a primary base at Royal Shrewsbury Hospital, and has now established a fully functioning Fundraising Office within the Cancer Centre itself. This has improved our relationships with staff in the Centre and made it easier for people coming in for treatment to chat to charity staff. We launched our second office in Plas Dolerw, Newtown in March 2023.

This has been a useful base for both fundraising and service delivery work, as well as developing relationships with co-located service providers such as the Powys Association of Voluntary Organisations (PAVO). Following a successful first year, we intend to maintain the lease on this office.

The Charity currently has nine Trustees. The maximum number of Trustees is 15 and there must be a minimum of five. Trustees are appointed for a term of five years and new Trustees are appointed with regards to skills, knowledge and experience needed for the effective administration of the charity. New Trustees go through an induction process to ensure they are fully informed about the charity and its aims and objectives.

The Board of Trustees meets quarterly but there are also various sub-committees as follows:

- Finance
- Fundraising
- Audit and Risk
- Grants and Projects
- HR

The sub-committees meet in between Trustee meetings, as required, and the Chair of each sub-committee reports back to Trustee meetings and makes recommendations to the Board.

## Risk Management

The Trustees have examined the major strategic, business and operational risks which the charity faces. The Chief Executive Officer reports regularly to trustees on matters of risk management. Each sub-committee of the Board reviews risks appropriate to their responsibilities and reports back to Audit & Risk sub-committee.



# Trustees report and accounts

The Audit and Risk sub-committee meets regularly to review risks and reports back to all trustees to recommend the steps that should be taken to minimise these risks, wherever possible.

The Trustees have implemented a Scheme of Delegation, giving responsibility to the Chief Executive Officer for operational risks. The Chief Executive Officer attends Audit & Risk sub-committee meetings and escalates serious risks to the Chair of Trustees as appropriate.

## Financial review

The attached Statement of Financial Activities for the period from 1 April 2023 to 31 March 2024 reflects the incoming resources, resources expended and the overall movement in funds for the year.

Our community fundraising is beginning to return to previous levels and with the diversification of our activities, other areas of fundraising have greatly improved, leading to another very strong year.

We would like to thank AKO Foundation, the Much Wenlock Forester Charitable Trust, Espley Charitable Trust, The Heart of England Community Foundation, and the Hospital Saturday Fund, who have supported us this year. We have also had some generous support from local businesses and people throughout our community. In particular, we thank Telford Plaza Ltd, who made a significant donation of £416,666 to fund the purchase of the Surface Guided Radiotherapy (SGRT) equipment at Royal Shrewsbury Hospital.

## Reserves

The Trustees aim to keep £200,000 (2022: £200,000) in designated reserves, to cover running costs in the event of a serious cash flow problem or other major unforeseen expenses.

The Trustees have also designated a legacy received from a Powys resident to extend our LiveLife and iCan project work into Powys.

The Trustees liaise with Shrewsbury and Telford Hospitals NHS Trust and other organisations that provide cancer services locally to identify projects on which to spend their funds.

The Trustees are of the opinion that the resources they retain and anticipate receiving in the future will enable them to meet effectively the current and future aims for the relief of cancer patients in Shropshire, Telford & Wrekin and Mid Wales.

Total funds held £1,373,433  
Restricted funds £(10,576)  
Designated funds £(472,357)  
Tangible fixed assets £(65,183)  
Free reserves £825,317

The unrestricted free reserves of the charity as at 31 March 2024 were £825,317 (2023: £730,550).

The capital commitments will be met by current and future fundraising (as per note 23) and are therefore excluded from the free reserves calculation.

# Trustees report and accounts

## Investments

The Trustees are authorised to invest the assets of the charity in whatever way they believe to be in the best interests of the charity and its objectives.

In light of the current economic situation, the Trustees have considered the most appropriate policy for investing funds and have agreed that retaining funds in cash investments best meet their requirements to generate income whilst maintaining capital for the long term.

We are now using the Flagstone investment platform, which allows us to spread our cash investments across multiple accounts more easily, allowing us to move funds to where the best interest rates can be found. This also allows us to keep more of our funds under the £85,000 FSCS protection limit as we can easily access a wider range of account providers.

## Statement of Trustee's responsibilities For the year ended 31 March 2024

The Trustees are responsible for preparing the Trustees' Report and the financial statements in accordance with applicable law and United Kingdom Accounting Standards (United Kingdom Generally Accepted Accounting Practice).

The law applicable to charities in England and Wales requires the Trustees to prepare financial statements for each financial year which give a true and fair view of the state of affairs of the charity and of the incoming resources and application of resources of the charity for that year. In preparing these financial statements, the Trustees are required to:

- select suitable accounting policies and then apply them consistently;
- observe the methods and principles in the Charities SORP;
- make judgements and estimates that are reasonable and prudent;
- state whether applicable accounting standards have been followed, subject to any material departures disclosed and explained in the financial statements; and
- prepare the financial statements on the going concern basis unless it is inappropriate to presume that the charity will continue in operation.

The Trustees are responsible for keeping sufficient accounting records that disclose with reasonable accuracy at any time the financial position of the charity and enable them to ensure that the financial statements comply with the Charities Act 2011, the Charity (Accounts and Reports) Regulations 2008 and the provisions of the trust deed.

They are also responsible for safeguarding the assets of the charity and hence for taking reasonable steps for the prevention and detection of fraud and other irregularities.

The Trustees' report was approved by the Board of Trustees.

Signature: 

Mr T Cooper

Vice-Chair

Date: 5 November 2024



# Independent Auditor's Report

## To the Trustees of Lingen Davies Cancer Fund CIO

### Opinion

We have audited the financial statements of Lingen Davies Cancer Fund CIO (the 'charity') for the year ended 31 March 2024 which comprise the statement of financial activities, the balance sheet, the statement of cash flows and notes to the financial statements, including significant accounting policies. The financial reporting framework that has been applied in their preparation is applicable law and United Kingdom Accounting Standards, including Financial Reporting Standard 102 The Financial Reporting Standard applicable in the UK and Republic of Ireland (United Kingdom Generally Accepted Accounting Practice).

In our opinion, the financial statements:

- give a true and fair view of the state of the charity's affairs as at 31 March 2024 and of its incoming resources and application of resources, for the year then ended;
- have been properly prepared in accordance with United Kingdom Generally Accepted Accounting Practice; and
- have been prepared in accordance with the requirements of the Charities Act 2011.

### Basis for opinion

We conducted our audit in accordance with International Standards on Auditing (UK) (ISAs (UK)) and applicable law. Our responsibilities under those standards are further described in the Auditor's responsibilities for the audit of the financial statements section of our report. We are independent of the charity in accordance with the ethical requirements that are relevant to our audit of the financial statements in the UK, including the FRC's Ethical Standard, and we have fulfilled our other ethical responsibilities in accordance with these requirements. We believe that the audit evidence we have obtained is sufficient and appropriate to provide a basis for our opinion.

### Conclusions relating to going concern

In auditing the financial statements, we have concluded that the Trustees' use of the going concern basis of accounting in the preparation of the financial statements is appropriate.

Based on the work we have performed, we have not identified any material uncertainties relating to events or conditions that, individually or collectively, may cast significant doubt on the charity's ability to continue as a going concern for a period of at least twelve months from when the financial statements are authorised for issue. Our responsibilities and the responsibilities of the Trustees with respect to going concern are described in the relevant sections of this report.

### Other information

The other information comprises the information included in the annual report other than the financial statements and our auditor's report thereon. The Trustees are responsible for the other information contained within the annual report.

Our opinion on the financial statements does not cover the other information and we do not express any form of assurance conclusion thereon. Our responsibility is to read the other information and, in doing so, consider whether the other information is materially inconsistent with the financial statements or our knowledge obtained in the course of the audit, or otherwise appears to be materially misstated. If we identify such material inconsistencies or apparent material misstatements, we are required to determine whether this gives rise to a material misstatement in the financial statements themselves. If, based on the work we have performed, we conclude that

there is a material misstatement of this other information, we are required to report that fact.

We have nothing to report in this regard.

### Matters on which we are required to report by exception

We have nothing to report in respect of the following matters in relation to which the Charities (Accounts and Reports) Regulations 2008 require us to report to you if, in our opinion:

- the information given in the financial statements is inconsistent in any material respect with the Trustees' report; or
- sufficient accounting records have not been kept; or
- the financial statements are not in agreement with the accounting records; or
- we have not received all the information and explanations we require for our audit.

### Responsibilities of Trustees

As explained more fully in the statement of Trustees' responsibilities, the Trustees are responsible for the preparation of the financial statements and for being satisfied that they give a true and fair view, and for such internal control as the Trustees determine is necessary to enable the preparation of financial statements that are free from material misstatement, whether due to fraud or error. In preparing the financial statements, the Trustees are responsible for assessing the charity's ability to continue as a going concern, disclosing, as applicable, matters related to going concern and using the going concern basis of accounting unless the Trustees either intend to cease operations, or have no realistic alternative but to do so.

# Independent Auditor's Report To the Trustees of Lingen Davies Cancer Fund CIO

## Auditor's responsibilities for the audit of the financial statements

We have been appointed as auditor under section 145 of the Charities Act 2011 and report in accordance with the Act and relevant regulations made or having effect thereunder.

Our objectives are to obtain reasonable assurance about whether the financial statements as a whole are free from material misstatement, whether due to fraud or error, and to issue an auditor's report that includes our opinion. Reasonable assurance is a high level of assurance but is not a guarantee that an audit conducted in accordance with ISAs (UK) will always detect a material misstatement when it exists. Misstatements can arise from fraud or error and are considered material if, individually or in the aggregate, they could reasonably be expected to influence the economic decisions of users taken on the basis of these financial statements. The extent to which our procedures are capable of detecting irregularities, including fraud, is detailed below.

- we identified the laws and regulations applicable to the Charity through discussions with the Trustees and other management, and from our knowledge and experience of the Charity sector;
- we focused on specific laws and regulations which we considered may have a direct material effect on the financial statements or the operations of the charity, including the Charity Act 2011 and taxation and data protection;
- we ensured that the management team collectively have the appropriate competence, capabilities and skills to identify or recognise non-compliance with applicable laws and regulations; and

- identified laws and regulations were communicated within the audit team regularly and the team remained alert to instances of non-compliance throughout the audit.

We assessed the susceptibility of the charity's financial statements to material misstatement, including obtaining an understanding of how fraud might occur, by:

- making enquiries of management as to where they considered there was susceptibility to fraud, their knowledge of actual, suspected, and alleged fraud; and
- considering the internal controls in place to mitigate risks of fraud and non-compliance with laws and regulations.

To address the risk of fraud through management bias and override of controls, we:

- performed analytical procedures to identify any unusual or unexpected relationships;
- test journal entries to identify unusual transactions;
- assess whether judgements and assumptions made in determining the accounting estimates set out were indicative of potential bias; and
- investigated the rationale behind significant or unusual transactions.

In response to the risk of irregularities and non-compliance with laws and regulations, we designed procedures which included, but were not limited to:

- agreeing financial statement disclosures to underlying supporting documentation;
- reading the minutes of meetings of those charged with governance; and
- enquiring of management as to actual and potential litigation and claim.

There are inherent limitations in our audit procedures described above. The more removed that laws and regulations are from financial transactions, the less likely it is that we would become aware of non-compliance. Auditing standards also limit the audit procedures required to identify non-compliance with laws and regulations to enquiry of the trustees and other management and the inspection of regulatory and legal correspondence, if any.

A further description of our responsibilities is available on the Financial Reporting Council's website at: <https://www.frc.org.uk/auditorsresponsibilities>. This description forms part of our auditor's report.

This report is made solely to the company's members, as a body, in accordance with section 391 of the Companies Act 2014. Our audit work has been undertaken so that we might state to the company's members those matters we are required to state to them in an auditor's report and for no other purpose. To the fullest extent permitted by law, we do not accept or assume responsibility to anyone other than the company and the company's members as a body, for our audit work, for this report, or for the opinions we have formed.

Signature: 

Helen Pierce (Senior Statutory Auditor)

WR Partners

Date: 5 November 2024

**WR Partners**  
**Chartered Accountants**  
**Statutory Auditor**

Belmont House  
Shrewsbury Business Park  
Shrewsbury  
SY2 6LG

WR Partners is eligible for appointment as auditor of the charity by virtue of its eligibility for appointment as auditor of a company under section 1212 of the Companies Act 2006.



## LINGEN DAVIES CANCER FUND CIO

### STATEMENT OF FINANCIAL ACTIVITIES INCLUDING INCOME AND EXPENDITURE ACCOUNT

FOR THE YEAR ENDED 31 MARCH 2024

		Unrestricted funds 2024	Restricted funds 2024	Total 2024	Unrestricted funds 2023	Restricted funds 2023	Total 2023
	Notes	£	£	£	£	£	£
<b>Income from:</b>							
Donations and legacies	2	667,850	416,666	1,084,516	891,189	-	891,189
Charitable activities	3	-	10,000	10,000	-	25,240	25,240
Other trading activities	4	198,481	-	198,481	204,417	-	204,417
Investments	5	49,667	-	49,667	18,519	-	18,519
<b>Total income</b>		<u>915,998</u>	<u>426,666</u>	<u>1,342,664</u>	<u>1,114,125</u>	<u>25,240</u>	<u>1,139,365</u>
<b>Expenditure on:</b>							
Raising funds	6	367,069	-	367,069	303,992	-	303,992
Charitable activities	7	561,841	453,923	1,015,764	396,872	32,044	428,916
<b>Total expenditure</b>		<u>928,910</u>	<u>453,923</u>	<u>1,382,833</u>	<u>700,864</u>	<u>32,044</u>	<u>732,908</u>
<b>Net income/(expenditure)</b>		<u>(12,912)</u>	<u>(27,257)</u>	<u>(40,169)</u>	<u>413,261</u>	<u>(6,804)</u>	<u>406,457</u>
Transfers between funds							
		-	-	-	52,449	(52,449)	-
<b>Net movement in funds</b>	10	<u>(12,912)</u>	<u>(27,257)</u>	<u>(40,169)</u>	<u>465,710</u>	<u>(59,253)</u>	<u>406,457</u>
<b>Reconciliation of funds:</b>							
Fund balances at 1 April 2023		1,375,769	37,833	1,413,602	910,059	97,086	1,007,145
<b>Fund balances at 31 March 2024</b>		<u>1,362,857</u>	<u>10,576</u>	<u>1,373,433</u>	<u>1,375,769</u>	<u>37,833</u>	<u>1,413,602</u>

The statement of financial activities includes all gains and losses recognised in the year. All income and expenditure derive from continuing activities.

## LINGEN DAVIES CANCER FUND CIO

### BALANCE SHEET

AS AT 31 MARCH 2024

	Notes	2024		2023	
		£	£	£	£
<b>Fixed assets</b>					
Intangible assets	14	-	-	-	4,000
Tangible assets	15	65,183	-	-	86,494
			65,183		90,494
<b>Current assets</b>					
Stocks	16	9,052	-	8,029	-
Debtors	17	181,145	-	393,293	-
Cash at bank and in hand		1,681,938	-	994,928	-
		1,872,135	-	1,396,250	-
<b>Creditors: amounts falling due within one year</b>	18	(563,885)	-	(73,142)	-
<b>Net current assets</b>			1,308,250		1,323,108
<b>Total assets less current liabilities</b>			1,373,433		1,413,602
<b>Net assets excluding pension liability</b>			1,373,433		1,413,602
<b>The funds of the charity</b>					
Restricted income funds	19	-	10,576	-	37,833
Unrestricted funds		-	1,362,857	-	1,375,769
			1,373,433		1,413,602

The financial statements were approved by the Trustees on 5 November 2024.



Mr T Cooper  
Vice-Chair

## LINGEN DAVIES CANCER FUND CIO

### STATEMENT OF CASH FLOWS FOR THE YEAR ENDED 31 MARCH 2024

	Notes	2024 £	£	2023 £	£
<b>Cash flows from operating activities</b>					
Cash generated from/(absorbed by) operations	25		638,500		(535,988)
<b>Investing activities</b>					
Purchase of tangible fixed assets		(1,157)		(8,417)	
Investment income received		49,667		18,519	
<b>Net cash generated from investing activities</b>			48,510		10,102
<b>Net cash used in financing activities</b>			-		-
<b>Net increase/(decrease) in cash and cash equivalents</b>			687,010		(525,886)
Cash and cash equivalents at beginning of year			994,928		1,520,814
<b>Cash and cash equivalents at end of year</b>			<u>1,681,938</u>		<u>994,928</u>



# Notes to the Financial Statements

## For the year ended 31 March 2024

### 1 Accounting policies

#### Charity information

Lingen Davies Cancer Fund CIO is a charitable incorporated organisation, registered in England and Wales.

#### 1.1 Accounting convention

The financial statements have been prepared in accordance with the charity's governing document, the Charities Act 2011 and "Accounting and Reporting by Charities: Statement of Recommended Practice applicable to charities preparing their accounts in accordance with the Financial Reporting Standard applicable in the UK and Republic of Ireland (FRS 102)" (as amended for accounting periods commencing from 1 January 2019). The charity is a Public Benefit Entity as defined by FRS 102.

The accounts are prepared in sterling, which is the functional currency of the charity. Monetary amounts in these financial statements are rounded to the nearest £. The accounts have been prepared on the historical cost convention. The principal accounting policies adopted are set out below.

#### 1.2 Going concern

At the time of approving the financial statements, the Trustees have a reasonable expectation that the charity has adequate resources to continue in operational existence for the foreseeable future. Thus the Trustees continue to adopt the going concern basis of accounting in preparing the financial statements.

#### 1.3 Charitable funds

Unrestricted funds are available for use at the discretion of the Trustees in furtherance of their charitable objectives unless the funds have been designated for other purposes.

Unrestricted funds are donations and other income received for the general objects of the charity.

Restricted funds are subject to specific conditions by donors or grantors as to how they may be used. The purposes and uses of the restricted funds are set out in the notes to the financial statements.

#### 1.4 Income

Income is recognised when the charity is legally entitled to it after any performance conditions have been met, the amounts can be measured reliably, and it is probable that income will be received.

Cash donations are recognised on receipt. Other donations are recognised once the charity has been notified of the donation, unless performance conditions require deferral of the amount. Income tax recoverable in relation to donations received under Gift Aid or deeds of covenant is recognised at the time of the donation.

Legacies are recognised on receipt or otherwise if the charity has been notified of an impending distribution, the amount is known, and receipt is expected. If the amount is not known, the legacy is treated as a contingent asset.

Assets given for use by the charity are recognised when receivable.

Income from government and other grants, whether 'capital' grants or 'revenue' grants, is recognised when the charity has entitlement to the funds, any performance conditions attached to the grant have been met, it is probable that the income will be received and the amount can be measured reliably.

Turnover is measured at the fair value of the consideration received or receivable and represents amounts receivable for goods and services provided in the normal course of business, net of discounts, VAT and other sales related taxes.

#### 1.5 Expenditure

Expenditure is recognised once there is a legal or constructive obligation to transfer economic benefit to a third party, it is probable that a transfer of economic benefits will be required in settlement, and the amount of the obligation can be measured reliably.

Expenditure is classified by activity. The costs of each activity are made up of the total of direct costs and shared costs, including support costs involved in undertaking each activity. Direct costs attributable to a single activity are allocated directly to that activity. Shared costs which contribute to more than one activity and support costs which are not attributable to a single activity are apportioned between those activities on a basis consistent with the use of resources. Central staff costs are allocated on the basis of time spent, and depreciation charges are allocated on the portion of the asset's use.

#### Direct Charitable Expenditure

The objects of the charity are to raise funds to provide grants to support the work of cancer health care professionals for the treatment of cancer patients in Shropshire, Telford and Wrekin and Mid Wales, the provision of services directly to cancer patients and raising awareness of cancer prevention in the area. Any expenditure specifically to achieve these objects is included in direct charitable expenditure.

# Notes to the Financial Statements

## For the year ended 31 March 2024

### Governance costs

Administration expenses of the charity relate to the costs of running the charity, such as insurance, accountancy fees and costs of statutory compliance, and include any costs which cannot be specifically attributed to another expenditure classification.

### 1.6 Intangible fixed assets other than goodwill

Intangible assets acquired separately from a business are recognised at cost and are subsequently measured at cost less accumulated amortisation and accumulated impairment losses.

Intangible assets acquired on business combinations are recognised separately from goodwill at the acquisition date where it is probable that the expected future economic benefits that are attributable to the asset will flow to the entity and the fair value of the asset can be measured reliably; the intangible asset arises from contractual or other legal rights; and the intangible asset is separable from the entity.

Amortisation is recognised so as to write off the cost or valuation of assets less their residual values over their useful lives on the following bases:

Website	33.33% p.a. on cost
---------	---------------------

### 1.7 Tangible fixed assets

Tangible fixed assets are initially measured at cost and subsequently measured at cost or valuation, net of depreciation and any impairment losses.

Depreciation is recognised so as to write off the cost or valuation of assets less their residual values over their useful lives on the following bases:

Equipment	20% p.a on cost
Software	33.33% p.a on cost
Motor vehicles	20% p.a on cost

The gain or loss arising on the disposal of an asset is determined as the difference between the sale proceeds and the carrying value of the asset, and is recognised in the statement of financial activities.

### 1.8 Impairment of fixed assets

At each reporting end date, the charity reviews the carrying amounts of its tangible and intangible assets to determine whether there is any indication that those assets have suffered an impairment loss. If any such indication exists, the recoverable amount of the asset is estimated in order to determine the extent of the impairment loss (if any).

### 1.9 Stocks

Stocks are stated at the lower of cost and estimated selling price less costs to complete and sell. Cost comprises direct materials and, where applicable, direct labour costs and those overheads that have been incurred in bringing the stocks to their present location and condition. Items held for distribution at no or nominal consideration are measured at the lower of replacement cost and cost.

Net realisable value is the estimated selling price less all estimated costs of completion and costs to be incurred in marketing, selling and distribution.

### 1.10 Cash and cash equivalents

Cash and cash equivalents include cash in hand, deposits held at call with banks and other short-term liquid investments with original maturities of three months or less.

### 1.11 Employee benefits

The cost of any unused holiday entitlement is recognised in the period in which the employee's services are received.

Termination benefits are recognised immediately as an expense when the charity is demonstrably committed to terminate the employment of an employee or to provide termination benefits.

### 1.12 Retirement benefits

Payments to defined contribution retirement benefit schemes are charged as an expense as they fall due.

### 1.13 Debtors

Debtors are recognised at the settlement amount due after any discount offered.

### 1.14 Creditors

Creditors are recognised where the charity has a present obligation resulting from a past event that will probably result in the transfer of funds to a third party and the amount due to settle the obligation can be measured or estimated reliably. Creditors and provisions are normally recognised at their settlement amount.



# Notes to the Financial Statements

## For the year ended 31 March 2024

### 2 Income from donations and legacies

	Unrestricted funds 2024	Restricted funds 2024	Total 2024	Unrestricted funds 2023	Restricted funds 2023	Total 2023
	£	£	£	£	£	£
Donations and gifts	581,240	416,666	997,906	617,026	-	617,026
Legacies	70,911	-	70,911	266,692	-	266,692
Grants	15,699	-	15,699	7,471	-	7,471
	<u>667,850</u>	<u>416,666</u>	<u>1,084,516</u>	<u>891,189</u>	<u>-</u>	<u>891,189</u>

### 2 Income from donations and legacies

(Continued)

	Unrestricted funds 2024	Restricted funds 2024	Total 2024	Unrestricted funds 2023	Restricted funds 2023	Total 2023
	£	£	£	£	£	£
Grants						
Other Grants	15,699	-	15,699	7,471	-	7,471
	<u>15,699</u>	<u>-</u>	<u>15,699</u>	<u>7,471</u>	<u>-</u>	<u>7,471</u>

The amounts shown above include unpaid legacies which due to the time and complexity taken for legacies to crystallise, this income may not be received within 12 months. Within debtors at the year end unpaid legacies amount to £165,701 (2023: £348,984).

### 3 Income from charitable activities

	Restricted funds 2024	Restricted funds 2023
	£	£
Service delivery		
LiveLife	10,000	25,240

### 4 Income from other trading activities

	Unrestricted funds 2024	Unrestricted funds 2023
	£	£
Fundraising events	181,169	188,787
Merchandise	17,312	15,630
Other trading activities	<u>198,481</u>	<u>204,417</u>

### 5 Income from investments

	Unrestricted funds 2024	Unrestricted funds 2023
	£	£
Interest received	<u>49,667</u>	<u>18,519</u>

### 6 Expenditure on raising funds

	Unrestricted funds 2024	Unrestricted funds 2023
	£	£
<b>Fundraising and publicity</b>		
Seeking donations, grants and legacies	1,943	1,324
Staging fundraising events	79,426	68,194
Advertising	15,450	4,222
Other fundraising costs	12,419	7,462
Staff costs	135,483	139,870
Support costs	114,752	75,108
	<u>359,473</u>	<u>296,180</u>
<b>Trading costs</b>		
Merchandise	7,596	7,812
Total costs	<u>367,069</u>	<u>303,992</u>

### 7 Expenditure on charitable activities

	Service delivery 2024	Grant-making 2024	Total 2024	Service delivery 2023	Grant-making 2023	Total 2023
	£	£	£	£	£	£
<b>Direct costs</b>						
Staff costs	53,908	-	53,908	65,723	-	65,723
LiveLife	12,916	-	12,916	26,342	-	26,342
	<u>66,824</u>	<u>-</u>	<u>66,824</u>	<u>92,065</u>	<u>-</u>	<u>92,065</u>
Grant funding of activities (see note 8)	-	735,369	735,369	-	202,229	202,229
<b>Share of support and governance costs (see note 9)</b>						
Support	85,580	114,752	210,332	57,527	75,108	132,635
Governance	1,296	1,943	3,239	663	1,324	1,987
	<u>163,700</u>	<u>852,064</u>	<u>1,015,764</u>	<u>150,255</u>	<u>278,661</u>	<u>428,916</u>
<b>Analysis by fund</b>						
Unrestricted funds	126,443	435,398	561,841	118,211	278,661	396,872
Restricted funds	37,257	416,666	453,923	32,044	-	32,044
	<u>163,700</u>	<u>852,064</u>	<u>1,015,764</u>	<u>150,255</u>	<u>278,661</u>	<u>428,916</u>

# Notes to the Financial Statements

## For the year ended 31 March 2024

### 8 Grants payable

	Grant- making 2024 £	Grant- making 2023 £
Grants to institutions (17 grants):		
Clinical Nurse Specialists	-	29
Clinic Rooms	-	617
Auto Contouring	16,054	-
Wig Vouchers	60,000	-
iCan	172,305	164,100
Scalp Cooling Cap	-	15,353
Grossing Station	41,580	-
Complementary Therapies	-	11,100
Surface Guided Radiotherapy	416,666	-
Ward 23 TVs	-	1,512
Ford Hall	9,960	-
Radar Keys	-	2,018
Kick Cancer	-	7,500
Other	18,794	-
	<u>735,369</u>	<u>202,229</u>

Grants payable from unrestricted funds amount to £318,713 (2023: £202,229) and from restricted funds £416,666 (2023: £nil).

### 9 Support costs allocated to activities

	2024 £	2023 £
Staff costs	256,228	140,293
Depreciation	26,468	26,305
Overheads	29,637	32,825
Training	12,751	8,320
Governance costs	5,182	3,311
	<u>330,266</u>	<u>211,054</u>
<b>Analysed between:</b>		
Fundraising	116,695	76,432
Service delivery	96,876	58,190
Grant-making	116,695	76,432
	<u>330,266</u>	<u>211,054</u>

Support and governance costs have been allocated based on the trustees estimated costs incurred being 37.5% to fundraising (2023: 40%), 37.5% to grant making (2023: 40%) and 25% to service delivery (2023: 20%) as well as the depreciation expense on the van.

### 10 Net movement in funds

	2024 £	2023 £
The net movement in funds is stated after charging/(crediting):		
Fees payable for the audit of the charity's financial statements	1,980	1,940
Depreciation of owned tangible fixed assets	22,468	22,305
Amortisation of intangible assets	4,000	4,000
	<u>28,448</u>	<u>28,245</u>

### 11 Trustees

None of the Trustees (or any persons connected with them) received any remuneration, benefits or expenses from the charity during the year.

During the year the charity received donations from four trustees (2023: nine), without conditions totalling £1,763 (2023: £1,837).

### 12 Employees

The average monthly number of employees during the year was:

	2024 Number	2023 Number
Administration	16	12

### Employment costs

	2024 £	2023 £
Wages and salaries	396,665	298,718
Social security costs	30,290	27,676
Other pension costs	18,664	19,492
	<u>445,619</u>	<u>345,886</u>

There were no employees whose annual remuneration was more than £60,000.

### Remuneration of key management personnel

The remuneration of key management personnel is as follows.

	2024 £	2023 £
Aggregate compensation	186,046	149,659

### 13 Taxation

The charity is exempt from taxation on its activities because all its income is applied for charitable purposes.



# Notes to the Financial Statements

## For the year ended 31 March 2024

### 14 Intangible fixed assets

	Website £
<b>Cost</b>	
At 1 April 2023 and 31 March 2024	12,000
<b>Amortisation and impairment</b>	
At 1 April 2023	8,000
Amortisation charged for the year	4,000
At 31 March 2024	12,000
<b>Carrying amount</b>	
At 31 March 2024	-
At 31 March 2023	4,000

### 15 Tangible fixed assets

	Equipment £	Software £	Motor vehicles £	Total £
<b>Cost</b>				
At 1 April 2023	17,729	13,980	99,864	131,573
Additions	1,157	-	-	1,157
At 31 March 2024	18,886	13,980	99,864	132,730
<b>Depreciation and impairment</b>				
At 1 April 2023	11,128	13,980	19,973	45,079
Depreciation charged in the year	2,495	-	19,973	22,468
At 31 March 2024	13,621	13,980	39,946	67,547
<b>Carrying amount</b>				
At 31 March 2024	5,265	-	59,918	65,183
At 31 March 2023	6,603	-	79,891	86,494

### 16 Stocks

	2024 £	2023 £
Finished goods and goods for resale	9,052	8,029

### 17 Debtors

	2024 £	2023 £
<b>Amounts falling due within one year:</b>		
Trade debtors	3,150	1,315
Prepayments and accrued income	177,995	391,978
	181,145	393,293

### 18 Creditors: amounts falling due within one year

	2024 £	2023 £
Trade creditors	10,448	-
Accruals and deferred income	553,437	73,142
	563,885	73,142

### 19 Restricted funds

The restricted funds of the charity comprise the unexpended balances of donations and grants held on trust subject to specific conditions by donors as to how they may be used.

	Movement in funds				Movement in funds			
	Balance at 1 April 2022 £	Incoming resources £	Resources expended £	Transfers £	Balance at 1 April 2023 £	Incoming resources £	Resources expended £	Balance at 31 March 2024 £
2019-21 appeal	52,449	-	-	(52,448)	-	-	-	-
LiveLife Core 20+	39,537	10,067	(21,303)	-	28,421	10,000	(28,417)	10,004
LiveLife Health Inequalities	5,000	15,153	(10,741)	-	8,412	-	(8,840)	572
Surface Guided Radiotherapy	-	-	-	-	-	418,866	(418,866)	-
	97,086	25,240	(32,044)	(52,448)	37,833	428,866	(453,923)	10,576

# Notes to the Financial Statements

## For the year ended 31 March 2024

### 20 Analysis of net assets between funds

	Unrestricted funds 2024 £	Restricted funds 2024 £	Total 2024 £
<b>At 31 March 2024:</b>			
Tangible assets	65,163	-	65,163
Current assets/(liabilities)	1,297,674	10,576	1,308,250
	<u>1,362,837</u>	<u>10,576</u>	<u>1,373,413</u>
	Unrestricted funds 2023 £	Restricted funds 2023 £	Total 2023 £
<b>At 31 March 2023:</b>			
Intangible fixed assets	4,000	-	4,000
Tangible assets	86,494	-	86,494
Current assets/(liabilities)	1,285,275	37,833	1,323,108
	<u>1,375,769</u>	<u>37,833</u>	<u>1,413,602</u>

### 21 Unrestricted funds

The unrestricted funds of the charity comprise the unexpended balances of donations and grants which are not subject to specific conditions by donors and grantors as to how they may be used. These include designated funds which have been set aside out of unrestricted funds by the trustees for specific purposes.

	At 1 April 2023 £	Incoming resources £	Resources expended £	Transfers £	At 31 March 2024 £
Running costs	200,000	-	-	-	200,000
Powys Project	354,724	-	(82,357)	-	272,367
General funds	821,045	915,998	(846,543)	-	890,500
	<u>1,375,769</u>	<u>915,998</u>	<u>(928,900)</u>	<u>-</u>	<u>1,362,857</u>
	At 1 April 2022 £	Incoming resources £	Resources expended £	Transfers £	At 31 March 2023 £
Running costs	200,000	-	-	-	200,000
Powys livelife	-	-	(2,918)	357,642	354,724
General funds	710,069	1,114,125	(897,946)	(305,193)	821,045
	<u>910,069</u>	<u>1,114,125</u>	<u>700,864</u>	<u>52,449</u>	<u>1,375,769</u>

### 22 Purpose of funds (material funds only)

#### Unrestricted funds

The unrestricted reserves represent accumulated funds received which are free to be used within the objectives of the charity. These funds are available for the future funding needs and working capital of the charity.

#### Designated reserves

The running cost reserve is a fund set aside to meet the 12 month running costs of the charity, if funding sources ceased or reduced. The Powys Project Fund was set aside from a legacy received in 2021/22. It is being used to extend the LiveLife and iCan project work to the Powys area.

#### Restricted reserves

##### 2019-21 Appeal

A new appeal was started in 2019 to raise further funds to assist SaTH with new projects. We agreed to fundraise approx £370,000 for an extension to the Lingen Davies clinic rooms and £450,000 for a new CT Scanner for the Radiotherapy department. These projects were delayed by 12 months because of Covid-19 but were completed in March 2022. The balance left in the Appeal has been allocated to buying chemotherapy Cool Caps in 2022/23, with the remaining funds going to the iCan project.

##### LiveLife

The charity is working with NHS Shropshire Telford and Wrekin to deliver the Core20+ and Health Inequalities projects, designed to increase the uptake of cancer screening in Telford and Wrekin.

### 23 Capital commitments

Amounts contracted for but not provided in the financial statements:

In addition to the grants already made in Note 8, at the end of the year, the Charity has committed to pay grants from current funds and future fund raising for the following:

#### Unrestricted funds

iCan Programme	£172,305
Living Well Videos	£10,000
Complementary Therapies	£45,981
Qube Cancer Champions	£28,000
Yoga Classes	£3,997
Tai Chi Classes	£8,040
Bridgnorth Cancer Support Group	£1,717
Blood Collection Tubes	£4,125
Therapeutic treatments for wellbeing and beauty	£5,400

### 24 Related party transactions

Transactions with related parties During the year trustees purchased merchandise and tickets for events from the charity at full cost totalling £135 (2023: £502).

AbbeyFest was a project in which Lingen Davies worked in partnership with Shrewsbury Abbey, Pop Up Shrop Ltd and Total Hospitality & Events Management. Pop Up Shrop Ltd and Total Hospitality & Events Management are owned and managed by Darren Tomkins, who is the partner of the Lingen Davies CEO. Darren was paid a discounted management fee and all other items were invoiced to the charity at cost. The total paid was £nil (2023: £5,226) The balance owed at the year end was nil (2023: £nil). During the year other purchases were made totalling £12 (2023: £nil).



# Notes to the Financial Statements

## For the year ended 31 March 2024

25	Cash generated from operations	2024 £	2023 £
	(Deficit)/surplus for the year	(40,169)	406,457
	Adjustments for:		
	Investment income recognised in statement of financial activities	(49,667)	(18,519)
	Amortisation and impairment of intangible assets	4,000	4,000
	Depreciation and impairment of tangible fixed assets	22,468	22,305
	Movements in working capital:		
	(Increase) in stocks	(1,023)	(7,391)
	Decrease/(increase) in debtors	212,148	(157,655)
	Increase/(decrease) in creditors	490,743	(785,165)
	<b>Cash generated from/(absorbed by) operations</b>	<u>638,500</u>	<u>(535,968)</u>



## Annual Report 2023/24

### Lingen Davies Cancer Fund CIO

#### Fundraising Office

Hamar Centre  
Royal Shrewsbury Hospital  
Mytton Oak Road  
Shrewsbury  
SY3 8XQ

#### Newtown Office

Plas Dolerw  
Milford Road  
Newtown  
SY16 2EH

**01743 492396**

**hello@lingendavies.co.uk**

Registered Charity No. 1160922

